

OPERATION HORMUZ

AIR FORCE 02 TIDEBREAKER

BRIEFING MATERIAL (CLASSIFIED)



MISSION: CM-1168/1169/1170/1171

AL DHAFRA AFB & AL MINHAD AFB

380TH AIR WING GROUP

2011.06.24

PART A. MISSION BRIEFING

MISSION: CM-1168/1169/1170/1171



SITUATION UPDATE

Day 04 marked a pivotal moment in the conflict, showcasing the combined effectiveness of the Navy and USAF in achieving significant operational milestones. Close Air Support missions played a crucial role in enabling amphibious landings across critical zones. On the western front, the USMC 1st Division's 2nd and 3rd Regiments landed at Bandar-Aftab and Bandar Charak, supported by precise Air Force strikes that neutralized anti-ship missile and rocket positions in the coastal mountains. These efforts turned previously inaccessible areas into viable beachheads. Simultaneously, the 7th Regiment executed a daring parachute operation to seize Qeshm Dayrestan Airport, while the 4th, 5th, and 6th Regiments conducted precision landings near Bandar-e-Jask, swiftly establishing a 20-kilometer strategic depth. The rapid assault at Bandar-Aftab surprised Iranian forces, who had heavily fortified Bandar Lengeh in anticipation of a landing there. This forced the Iranian Army to quickly redeploy its 5th Armored Division from Bandar Lengeh to Bandar Charak to counter the USMC advance before strategic depth could be consolidated. With key USMC supplies still en route, the Marines now face mounting challenges as the Iranian 3rd Artillery Brigade, positioned in nearby mountains, unleashes heavy shelling on their positions. These bombardments, combined with advancing Iranian armored columns, threaten to disrupt defensive preparations and slow the establishment of a stronghold. In response, the USAF Middle East Central Command coordinated a series of air support operations to bolster allied ground forces. Two F-16C packages were tasked with neutralizing the Iranian artillery brigade, while a single F-15E strike group targeted weapon supplies originating from Bandar Lengeh. Additionally, an A-10C package was deployed to interdict the advancing 5th Armored Division. These air operations are designed to alleviate pressure on ground forces, disrupt enemy momentum, and ensure that defensive lines can be solidified. As the Iranian counteroffensive intensifies, this joint effort underscores the urgency of the operation. Each moment lost could shift the balance, making it imperative for allied forces to act decisively to secure strategic positions and maintain the initiative in the evolving theater of war.

PART A. MISSION BRIEFING

MISSION: CM-1168/1169/1170/1171



MISSION BRIEFING

Package #1168 is tasked with neutralizing Iran's 11th and 12th Artillery Battalions, critical components of enemy fire support. Flights will begin cold on the ramp at Al Dhafra AFB, Viper 2 shall confirm successful loading of target coordinates into MC during the cold start. Both flights are scheduled for takeoff at 1010 LT. Following normal departure procedure, both flights will regroup at WP2 at 25,000 feet to prepare for push at 1025LT. At WP3, flights will "Fence In," completing final weapon and systems checks. At WP4, Viper 1 will engage the 11th battalion at WP5 as the primary target, targeting the artillery batteries and supporting vehicles with CBU-105; whilst Viper 2 will target the command center with GBU-24 laser-guided bombs to disable the battalion's operational control. Once the primary target is neutralized, Viper 1 and Viper 2 will assess their fuel and ammo status and decide if go for the secondary target at WP6. Once secondary objective is completed, Viper 2 could continue to strike the comms towers on the mountains as tertiary targets. Following the completion of their mission, Viper flights will regroup at WP7 for egress. Maintaining an altitude of 25,000 feet, flights will withdraw via WP8 at 15,000 feet before descending to Al Dhafra. Contact tower for normal arriving procedure and land safely.

Package #1169 is tasked with neutralizing Iran's 15th and 16th Artillery Battalions, vital components of the enemy's fire support. Flights will begin cold on the ramp at Al Dhafra AFB, Viper 4 shall confirm successful loading of target coordinates into MC during the cold start. Both flights are scheduled for takeoff at 1012 LT. Following standard departure procedures, Viper 3 and Viper 4 will regroup at WP2 at 25,000 feet to prepare push at 1025LT. At WP3, flights will "Fence In," completing weapon system checks and updating target data. Upon reaching WP4, Viper 3 will engage the 15th Battalion at WP5 as the primary target, deploying CBU-105 against artillery emplacements and resupply vehicles to disrupt their firepower. Simultaneously, Viper 4 will target the 15th Battalion's command center with GBU-24 laser-guided bombs, neutralizing its operational command capabilities. After confirming the destruction of primary objective, both flights will assess fuel and ammunition to determine the feasibility of proceeding to the secondary target at WP6, and if conditions permit, Viper 4 may proceed to engage comms towers on adjacent ridges as tertiary targets. Following mission completion, regroup at WP7 for egress, maintaining 25,000 feet for transit and descending to 15,000 feet at WP8. Contact Al Dhafra tower for standard arrival protocols and ensure a safe landing.

PART A. MISSION BRIEFING

MISSION: CM-1168/1169/1170/1171



Package #1170 aims to eliminate key logistical and production facilities at Bandar Lengeh Port and the Jenah weapon factory. Dodge 1 and Dodge 2 shall confirm the successful loading of targets coordinates during cold start. Takeoff from Al Dhafra AFB at 1012 LT. After takeoff, both flights will regroup at WP2, climbing to 25,000 feet to prepare for ingress at 1026LT. At WP3, flights will "Fence In," performing weapons checks and updating target data. At WP4, Dodge 1 will advance to WP5 to target Bandar Lengeh's weapon storage and cargo ships, using GBU-31s to destroy key infrastructures and transport vessels. Dodge 2 will standby at WP4, as backup to Dodge 1. On confirmation of destruction of primary objective at Bandar Lengeh port, Dodge 2 could continue to WP6, strike the Jenah weapon factory. This facility houses production lines and critical storage for advanced weapon systems. Using a mix of GBU-31s, Dodge 2 will focus on assembly workshops and processing units, ensuring complete disruption of production capabilities. Following the strikes, Dodge flights will regroup at WP7 for egress, maintaining altitude of 25,000 feet. Proceed to WP8 then descend to 15,000 feet and contact Al Dhafra for arrival.

Package #1171 is tasked with interdicting armored groups advancing toward Bandar Charak. Hawg 1 and Hawg 2 (A-10C two-ship flights) will launch from Al Minhad AFB at 1013 LT, following Ford 1 and Ford 2's (F-15C two-ship flights) takeoff at the same air base at 1010LT. After takeoff, Fords flights will regroup at WP2 at 25,000 feet with push time set at 1020LT; whilst Hawgs flights will rendezvous at WP2 at 15,000 feet with push time at 1025LT. At WP3, Fords flight will fence in and perform G-warm ups, whilst Hawgs flights check for updates and coordinating attack priorities. At WP4, Fords flight will proceed to stations where they will perform CAP tasks with VUL time of 60 minutes from 1030LT to 1130LT. For Hawgs flight, they should search and engage the elements of the convoy between WP5 to WP6, mainly targeting tanks and APCs. The interdicting flights will coordinate with AWACS (callsign Darkstar) to maintain situational awareness, particularly regarding potential air threats or nearby SAM systems. After completing the mission, Fords and Hawgs will egress via WP7 at 25,000 and 15,000 feet respectively, maintaining tactical spacing and monitoring fuel levels. The return route via WP8 will allow flights to descend to landing altitude at Al Minhad AFB. This mission is critical in halting Iranian armored reinforcements, providing allied ground forces the opportunity to establish a secure defensive line without immediate pressure from enemy mechanized units. Good hunting.

[Designer's Note]

1. AI Flight will be activated at 10 minutes after mission start if no Players sit in a flight.
2. Recommend to pause game until all Players are in seats and ready.

PART B. TACTICAL INFORMATION
MISSION: CM-1168/1169/1170/1171



BASIC INFORMATION

START TIME 24-JUN-2011 1000LT (0600UTC)
TAKEOFF TIME 1010LT LAND TIME 1120LT
HOME FREQ AL DHAFRA 251.1AM TCN 96X AL MINHAD 250.1AM
WX CLR SR 0526LT SS 1912LT TEMP 25 C CLD 18K WIND 120 7KTS GOOD VSBY

MISSION OBJECTIVES

#1168	PRI	Destroy Iran 11th Artillery Battalion	SEC Destroy Iran 12th Artillery Battalion
#1169	PRI	Destroy Iran 15th Artillery Battalion	SEC Destroy Iran 16th Artillery Battalion
#1170	PRI	Destroy Bandar Lengeh port	SEC Destroy Jenah weapon factory
#1171	PRI	Interdict enemy armory groups moving toward Bandar Charak	

THREAT ANALYSIS

Air to air	Mig-29, F-14, F-1, F-4 (Iran CAP Flights)
Surface to air	SA-10 at Bandar Abbas, SA-10 at Lar Air Base, SA-6 6nm SW of Kermeran

PACKAGE ELEMENTS

PKG#	FLIGHT	A/C	NO.	AIRBASE	TASK	TARGET
1168	Viper 1	F-16C	2	Al Dhafra	Bombing	11th & 12th artilleries
1168	Viper 2	F-16C	2	Al Dhafra	Bombing	11th & 12th Cmd center
1169	Viper 3	F-16C	2	Al Dhafra	Bombing	15th & 16th artilleries
1169	Viper 4	F-16C	2	Al Dhafra	Bombing	15th & 16th Cmd center
1170	Dodge 1	F-15E	2	Al Dhafra	OCA Strike	Bandar Lengeh port
1170	Dodge 2	F-15E	2	Al Dhafra	OCA Strike	Jenah weapon factory
1171	Hawg 1	A-10C	2	Al Minhad	Interdict	Armors between WP5-6
1171	Hawg 2	A-10C	2	Al Minhad	Interdict	Armors between WP5-6
1171	Ford 1	F-15C	2	Al Minhad	TARCAP	Enemy Airborne Threat
1171	Ford 2	F-15C	2	Al Minhad	TARCAP	Enemy Airborne Threat

SUPPORT FLIGHT

FLIGHT	A/C	NO.	AIRBASE	TASK	COMM	TCN
Darkstar	E-3A	1	Liwa AFB	AWACS	UHF CH5	
Magic	E-2D	1	Liwa AFB	AWACS	UHF CH6	
Wizard	E-3A	1	Liwa AFB	AWACS	UHF CH7	
Texaco 3	KC-135	1	Liwa AFB	Refuel	UHF CH8	57X
Texaco 4	KC-135	1	Liwa AFB	Refuel	UHF CH9	58X
Texaco 5	KC-135	1	Liwa AFB	Refuel	UHF CH10	59X

ALTERNATE AIRFIELD

AIRFIELD	FREQUENCY	COORDINATE	REMARKS
Al Minhad	250.10 AM / 118.55 AM	N25°01'34" E55°22'03"	RWY 13/31
Khasab	250.00 AM / 124.35 AM	N23°39'06" E53°49'27"	RWY 01/19

PART B. TACTICAL INFORMATION
MISSION: CM-1168/1169/1170/1171



LOADOUT



	9	8	7	6	5R	5	5L	4	3	2	1
Viper 1-1	AC	9X	2*105	WT	T	ECM	H	WT	2*105	9X	AC
Viper 1-2	AC	9X	2*105	WT	T	ECM	H	WT	2*105	9X	AC
Viper 2-1	AC	9X	GBU24	WT	T	ECM	H	WT	GBU24	9X	AC
Viper 2-2	AC	9X	GBU24	WT	T	ECM	H	WT	GBU24	9X	AC
Viper 3-1	AC	9X	2*105	WT	T	ECM	H	WT	2*105	9X	AC
Viper 3-2	AC	9X	2*105	WT	T	ECM	H	WT	2*105	9X	AC
Viper 4-1	AC	9X	GBU24	WT	T	ECM	H	WT	GBU24	9X	AC
Viper 4-2	AC	9X	GBU24	WT	T	ECM	H	WT	GBU24	9X	AC

FLIGHT PLAN (VIPER 1,2)

WP	NAME	TIME	SPEED	ALTITUDE	ACTION	REMARKS
0	ADB	1010L			Takeoff	Bingo 2500 lbs
1	DEP	1013L	0.60M	MSL 5K	Outbound	Contact Departure
2	RV	1018L	0.60M	MSL 25K	Regroup	Push Time 1025L
3	PRE	1030L	0.75M	MSL 25K	Ingress	Fence In
4	IP	1040L	0.75M	MSL 25K	IP	Initial Point
5	PRI	1042L	0.75M	MSL 25K	Attack	Primary Target
6	SEC	1052L	0.75M	MSL 25K	Attack	Secondary Target
7	EGR	1100L	0.75M	MSL 25K	Egress	Fence Out
8	RET	1112L	0.70M	MSL 15K	Inbound	Contact Arrival
9	ARR	1118L	0.40M	MSL 3K	Arrival	Turn Final
10	RWY	1120L			Landing	Runway 31L

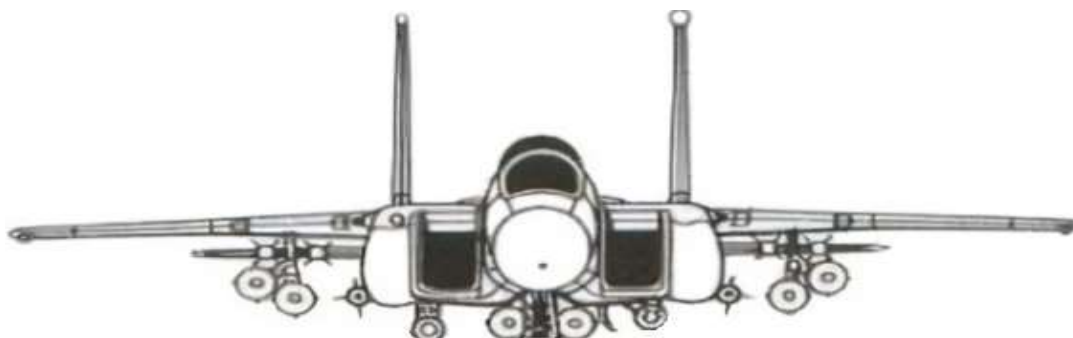
FLIGHT PLAN (VIPER 3,4)

WP	NAME	TIME	SPEED	ALTITUDE	ACTION	REMARKS
0	ADB	1011L			Takeoff	Bingo 2500 lbs
1	DEP	1014L	0.60M	MSL 5K	Outbound	Contact Departure
2	RV	1019L	0.60M	MSL 25K	Regroup	Push Time 1025L
3	PRE	1030L	0.75M	MSL 25K	Ingress	Fence In
4	IP	1040L	0.75M	MSL 25K	IP	Initial Point
5	PRI	1042L	0.75M	MSL 25K	Attack	Primary Target
6	SEC	1052L	0.75M	MSL 25K	Attack	Secondary Target
7	EGR	1100L	0.75M	MSL 25K	Egress	Fence Out
8	RET	1112L	0.70M	MSL 15K	Inbound	Contact Arrival
9	ARR	1118L	0.40M	MSL 3K	Arrival	Turn Final
10	RWY	1120L			Landing	Runway 31L

PART B. TACTICAL INFORMATION
MISSION: CM-1168/1169/1170/1171



LOADOUT



	8B	8	8A	RC	7C	6C	NVP	5	TGP	4C	3C	LC	2B	2	2A
Dodge 1-1	AC		AC	GBU31*2			N	CT	T		GBU31*2		AC		AC
Dodge 1-2	AC		AC	GBU31*2			N	CT	T		GBU31*2		AC		AC
Dodge 2-1	AC		AC	GBU31*2			N	CT	T		GBU31*2		AC		AC
Dodge 2-2	AC		AC	GBU31*2			N	CT	T		GBU31*2		AC		AC

FLIGHT PLAN (DODGE 1)

WP	NAME	TIME	SPEED	ALTITUDE	ACTION	REMARKS
0	ADB	1012L			Takeoff	Bingo 3500 lbs
1	DEP	1015L	0.60M	MSL 5K	Outbound	Contact Departure
2	RV	1020L	0.60M	MSL 25K	Regroup	Push Time 1026L
3	PRE	1032L	0.80M	MSL 25K	Ingress	Fence In
4	IP	1040L	0.80M	MSL 25K	IP	Initial Point
5	PRI	1043L	0.80M	MSL 25K	Attack	Primary Target
6	SEC				Attack	Secondary Target
7	EGR	1100L	0.75M	MSL 25K	Egress	Fence Out
8	RET	1115L	0.70M	MSL 15K	Inbound	Contact Arrival
9	ARR	1121L	0.40M	MSL 3K	Arrival	Turn Final
10	RWY	1123L			Landing	Runway 31L

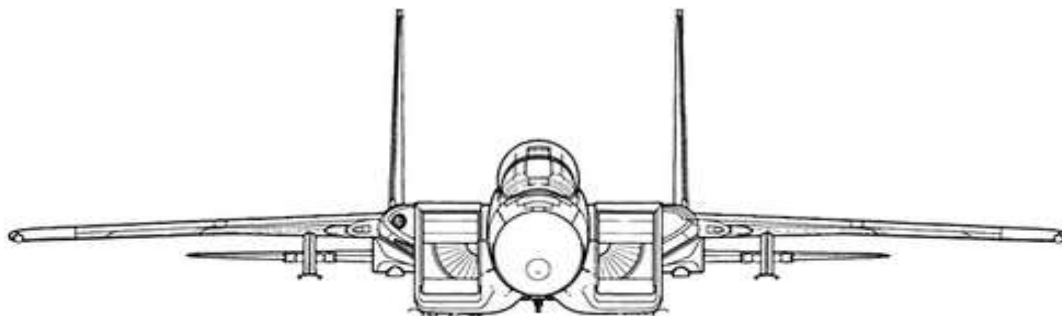
FLIGHT PLAN (DODGE 2)

WP	NAME	TIME	SPEED	ALTITUDE	ACTION	REMARKS
0	ADB	1012L			Takeoff	Bingo 3500 lbs
1	DEP	1015L	0.60M	MSL 5K	Outbound	Contact Departure
2	RV	1020L	0.60M	MSL 25K	Regroup	Push Time 1026L
3	PRE	1032L	0.80M	MSL 25K	Ingress	Fence In
4	IP	1040L	0.80M	MSL 25K	IP	Initial Point
5	PRI				Attack	Primary Target
6	SEC	1046L	0.80M	MSL 25K	Attack	Secondary Target
7	EGR	1105L	0.75M	MSL 25K	Egress	Fence Out
8	RET	1120L	0.70M	MSL 15K	Inbound	Contact Arrival
9	ARR	1126L	0.40M	MSL 3K	Arrival	Turn Final
10	RWY	1128L			Landing	Runway 31L

PART B. TACTICAL INFORMATION
MISSION: CM-1168/1169/1170/1171



LOADOUT



	11	10	9	8	7	6	5	4	3	2	1
Ford 1-1	AC	WT	AC	AB	AB	CT	AB	AB	AC	WT	AC
Ford 1-2	AC	WT	AC	AB	AB	CT	AB	AB	AC	WT	AC
Ford 2-1	AC	WT	AC	AB	AB	CT	AB	AB	AC	WT	AC
Ford 2-2	AC	WT	AC	AB	AB	CT	AB	AB	AC	WT	AC

FLIGHT PLAN (FORD 1)

WP	NAME	TIME	SPEED	ALTITUDE	ACTION	REMARKS
0	AMB	1010L			Takeoff	Bingo 3500 lbs
1	DEP	1012L	0.60M	MSL 5K	Outbound	Contact Departure
2	RV	1016L	0.60M	MSL 25K	Regroup	Push Time 1020L
3	PRE	1023L	0.85M	MSL 35K	Ingress	Fence In
4	STA	1028L	0.95M	MSL 35K	Check In	Pre on-station
5	CAP	1030L	0.80M	MSL 35K	CAP	On Station 1030L
6	CAP		0.80M	MSL 35K	CAP	Off Station 1130L
7	EGR	1135L	0.75M	MSL 25K	Egress	Fence Out
8	RET	1145L	0.70M	MSL 15K	Inbound	Contact Arrival
9	ARR	1150L	0.40M	MSL 3K	Arrival	Turn Final
10	RWY	1153L			Landing	Runway 27

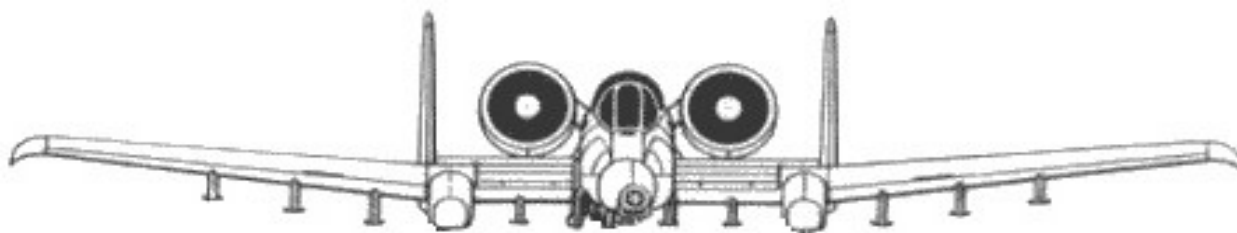
FLIGHT PLAN (FORD 2)

WP	NAME	TIME	SPEED	ALTITUDE	ACTION	REMARKS
0	AMB	1011L			Takeoff	Bingo 3500 lbs
1	DEP	1013L	0.60M	MSL 5K	Outbound	Contact Departure
2	RV	1017L	0.60M	MSL 25K	Regroup	Push Time 1020L
3	PRE	1023L	0.85M	MSL 35K	Ingress	Fence In
4	STA	1028L	0.95M	MSL 35K	Check In	Pre on-station
5	CAP	1030L	0.80M	MSL 35K	CAP	On Station 1030L
6	CAP		0.80M	MSL 35K	CAP	Off Station 1130L
7	EGR	1135L	0.75M	MSL 25K	Egress	Fence Out
8	RET	1145L	0.70M	MSL 15K	Inbound	Contact Arrival
9	ARR	1150L	0.40M	MSL 3K	Arrival	Turn Final
10	RWY	1153L			Landing	Runway 27

PART B. TACTICAL INFORMATION
MISSION: CM-1168/1169/1170/1171



LOADOUT



	11	10	9	8	7	6	5	4	3	2	1
Hawg 1-1	2*9M	T	3*65D	Rkts				Rkts	3*65D	Rkts	ECM
Hawg 1-2	2*9M	T	3*65D	Rkts				Rkts	3*65D	Rkts	ECM
Hawg 2-1	2*9M	T	3*65D	Rkts				Rkts	3*65D	Rkts	ECM
Hawg 2-2	2*9M	T	3*65D	Rkts				Rkts	3*65D	Rkts	ECM

FLIGHT PLAN (HAWG 1)

WP	NAME	TIME	SPEED	ALTITUDE	ACTION	REMARKS
0	AMB	1012L			Takeoff	Bingo 2500 lbs
1	DEP	1015L	0.40M	MSL 5K	Outbound	Contact Departure
2	RV	1020L	0.40M	MSL 15K	Regroup	Push Time 1025L
3	PRE	1030L	0.40M	MSL 15K	Ingress	Fence In
4	IP	1040L	0.40M	MSL 15K	IP	Initial Point
5	BEG	1045L	0.40M	MSL 10K	Attack	Interdiction Begin
6	END				Attack	Interdiction End
7	EGR	1030L	0.40M	MSL 15K	Egress	Fence Out
8	RET	1047L	0.40M	MSL 15K	Inbound	Contact Arrival
9	ARR	1052L	0.40M	MSL 3K	Arrival	Turn Final
10	RWY	1055L			Landing	Runway 27

FLIGHT PLAN (HAWG 1)

WP	NAME	TIME	SPEED	ALTITUDE	ACTION	REMARKS
0	AMB	1013L			Takeoff	Bingo 2500 lbs
1	DEP	1016L	0.40M	MSL 5K	Outbound	Contact Departure
2	RV	1021L	0.40M	MSL 15K	Regroup	Push Time 1025L
3	PRE	1030L	0.40M	MSL 15K	Ingress	Fence In
4	IP	1040L	0.40M	MSL 15K	IP	Initial Point
5	BEG	1045L	0.40M	MSL 10K	Attack	Interdiction Begin
6	END				Attack	Interdiction End
7	EGR	1030L	0.40M	MSL 15K	Egress	Fence Out
8	RET	1047L	0.40M	MSL 15K	Inbound	Contact Arrival
9	ARR	1052L	0.40M	MSL 3K	Arrival	Turn Final
10	RWY	1055L			Landing	Runway 27



COMMS LADDER

UHF CODE	AGCY	FREQ	MOD	VHF CODE	AGCY	FREQ	MOD
1	Green 1	Al Dhafra	251.10 AM	1	Green 1	Al Dhafra	126.50 AM
2	Green 2	Al Minhad	250.10 AM	2	Green 2	Al Minhad	118.55 AM
3	Green 3	Liwa	250.95 AM	3	Green 3	Liwa	119.30 AM
4	Green 4	Khasab	250.00 AM	4	Green 4	Khasab	124.35 AM
5	Red 1	Darkstar	256.00 AM	5	Yellow 1	Viper 1	131.10 AM
6	Red 2	Magic	264.00 AM	6	Yellow 2	Viper 2	131.20 AM
7	Red 3	Wizard	265.00 AM	7	Yellow 3	Viper 3	131.30 AM
8	Violet 1	Texaco 3	257.30 AM	8	Yellow 4	Viper 4	131.40 AM
9	Violet 2	Texaco 4	257.40 AM	9	Orange 1	Dodge 1	132.10 AM
10	Violet 3	Texaco 5	257.50 AM	10	Orange 2	Dodge 2	132.20 AM
11				11	Orange 3	Dodge 3	132.30 AM
12				12	Orange 4	Dodge 4	132.40 AM
13				13	Blue 1	Hawg 1	141.10 AM
14				14	Blue 2	Hawg 2	141.20 AM
15				15	Blue 3	Hawg 3	141.30 AM
16				16	Blue 4	Hawg 4	141.40 AM
17				17	Indigo 1	Ford 1	142.10 AM
18				18	Indigo 2	Ford 2	142.20 AM
19				19	Indigo 3	Ford 3	142.30 AM
20				20	Indigo 4	Ford 4	142.40 AM

OTHER TACTICAL INFO

CALLSIGN	TAIL#	ROLE	A/A TCN	DATALINK	LSR CODE
Viper 1-1	91	Lead	11X	VR11	1651
Viper 1-2	92	Wing	12X	VR12	1652
Viper 2-1	93	Lead	13X	VR21	1653
Viper 2-2	94	Wing	14X	VR22	1654
Viper 3-1	95	Lead	15X	VR31	1655
Viper 3-2	96	Wing	16X	VR32	1656
Viper 4-1	97	Lead	17X	VR41	1657
Viper 4-2	98	Wing	18X	VR42	1658
Dodge 1-1	81	Lead	21X	DE11	1661
Dodge 1-2	82	Wing	22X	DE12	1662
Dodge 2-1	83	Lead	23X	DE21	1663
Dodge 2-2	84	Wing	24X	DE22	1664
Hawg 1-1	171	Lead	31X	HG11	1671
Hawg 1-2	172	Wing	32X	HG12	1672
Hawg 2-1	173	Lead	33X	HG21	1673
Hawg 2-2	174	Wing	34X	HG22	1674
Ford 1-1	201	Lead		FD11	
Ford 1-2	202	Wing		FD12	
Ford 2-1	203	Lead		FD21	
Ford 2-2	204	Wing		FD22	

PART B. TACTICAL INFORMATION
MISSION: CM-1168/1169/1170/1171



TARGET COORDINATE (PKG#1168)

NO	TYPE	NAME	COORDINATE	ALT (FT)	TOT	REMARK
1	PRI	A1	N 26°51.724' E 54°27.42	702	NIL	Command Center
2	PRI	A2	N 26°50.299' E 54°31.45	398	NIL	Command Center
3	SEC	D1	N 26°55.035' E 54°29.54	4329	NIL	Comms Tower
4	SEC	D2	N 26°56.162' E 54°23.13	4531	NIL	Comms Tower

TARGET COORDINATE (PKG#1169)

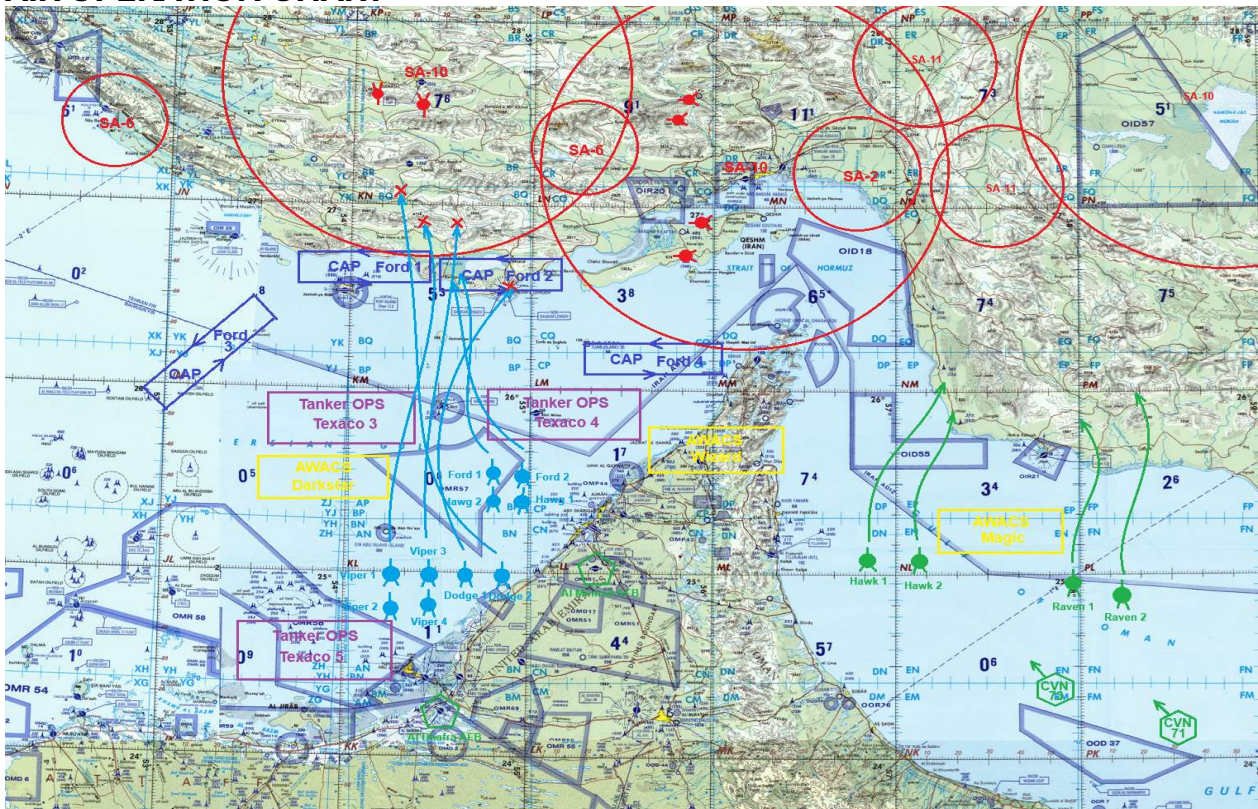
NO	TYPE	NAME	COORDINATE	ALT (FT)	TOT	REMARK
1	PRI	A3	N 26°44.403' E 54°33.76	104	NIL	Command Center
2	PRI	A4	N 26°47.575' E 54°34.23	1431	NIL	Command Center
3	SEC	D3	N 26°47.026' E 54°35.14	1816	NIL	Comms Tower
4	SEC	D4	N 26°51.672' E 54°41.52	2758	NIL	Comms Tower

TARGET COORDINATE (PKG#1170)

NO	TYPE	NAME	COORDINATE	ALT (FT)	MSN	REMARK
1	PRI	B1	N 26°32.835' E 54°52.76	12	1/1	Weapon Storage
2	PRI	B2	N 26°32.861' E 54°52.80	12	1/2	Weapon Storage
3	PRI	B3	N 26°32.890' E 54°52.84	12	1/3	Weapon Storage
4	PRI	B4	N 26°32.919' E 54°52.88	12	1/4	Weapon Storage
5	PRI	B5	N 26°32.850' E 54°52.98	0	1/5	Cargo Ship
6	PRI	B6	N 26°32.885' E 54°53.03	0	1/6	Cargo Ship
7	PRI	B7	N 26°32.961' E 54°53.15	0	1/7	Cargo Ship
8	PRI	B8	N 26°32.894' E 54°53.10	0	1/8	Tanker
9	SEC	C1	N 27°00.725' E 54°17.78	1074	2/1	Weapon Factory
10	SEC	C2	N 27°00.748' E 54°17.71	1071	2/2	Parts Warehouse
11	SEC	C3	N 27°00.808' E 54°17.77	1072	2/3	Fuel Refinery
12	SEC	C4	N 27°00.774' E 54°17.81	1074	2/4	Fuel Tanks
13	SEC	C5	N 27°00.948' E 54°17.94	1073	2/5	Assembly Workshop
14	SEC	C6	N 27°00.990' E 54°17.97	1072	2/6	Processing Unit
15	SEC	C7	N 27°01.018' E 54°17.99	1072	2/7	Processing Unit
16	SEC	C8	N 27°00.916' E 54°17.99	1076	2/8	Product Storage



AIR OPERATION CHART



FLIGHT PLAN

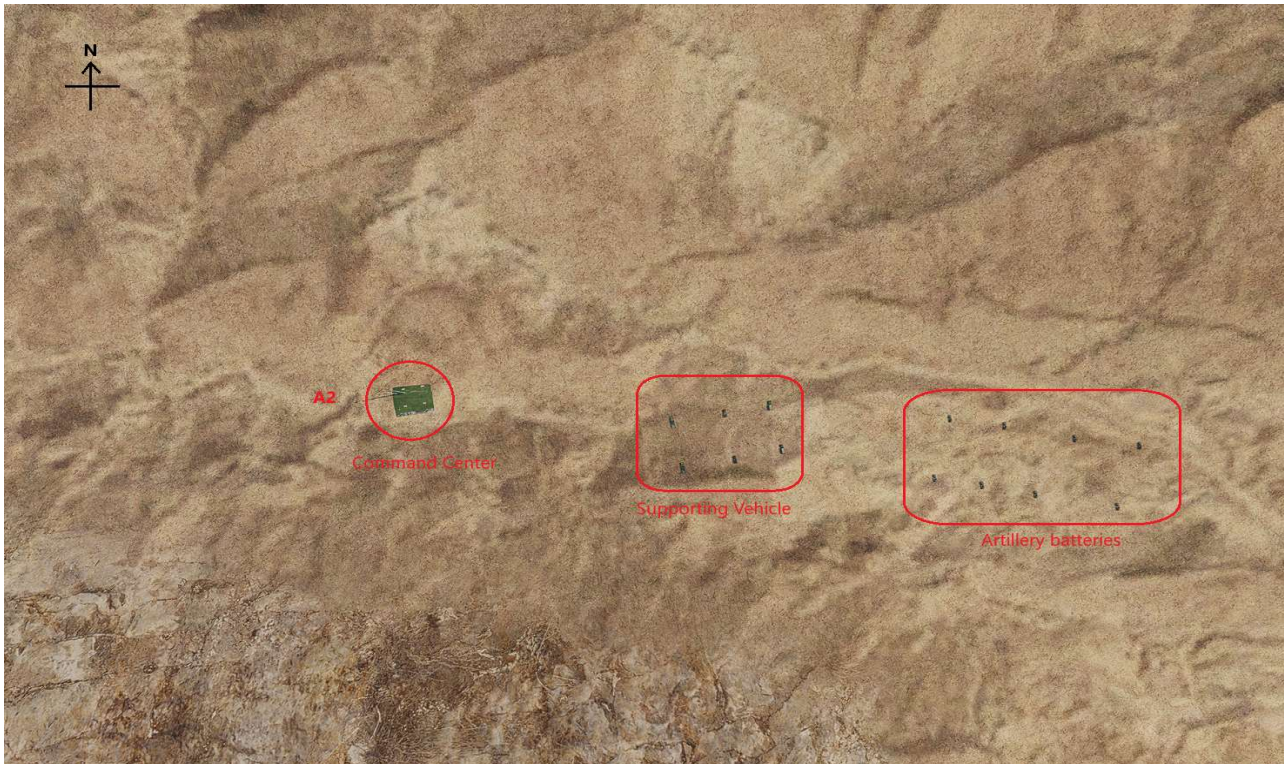




TARGET IMAGE (PKG#1168 PRIMARY - IRAN 11TH ARTILLERY BATTALION)



TARGET IMAGE (PKG#1168 SECONDARY - IRAN 12TH ARTILLERY BATTALION)





TARGET IMAGE (PKG#1169 PRIMARY - IRAN 15TH ARTILLERY BATTALION)



TARGET IMAGE (PKG#1169 SECONDARY - IRAN 16TH ARTILLERY BATTALION)

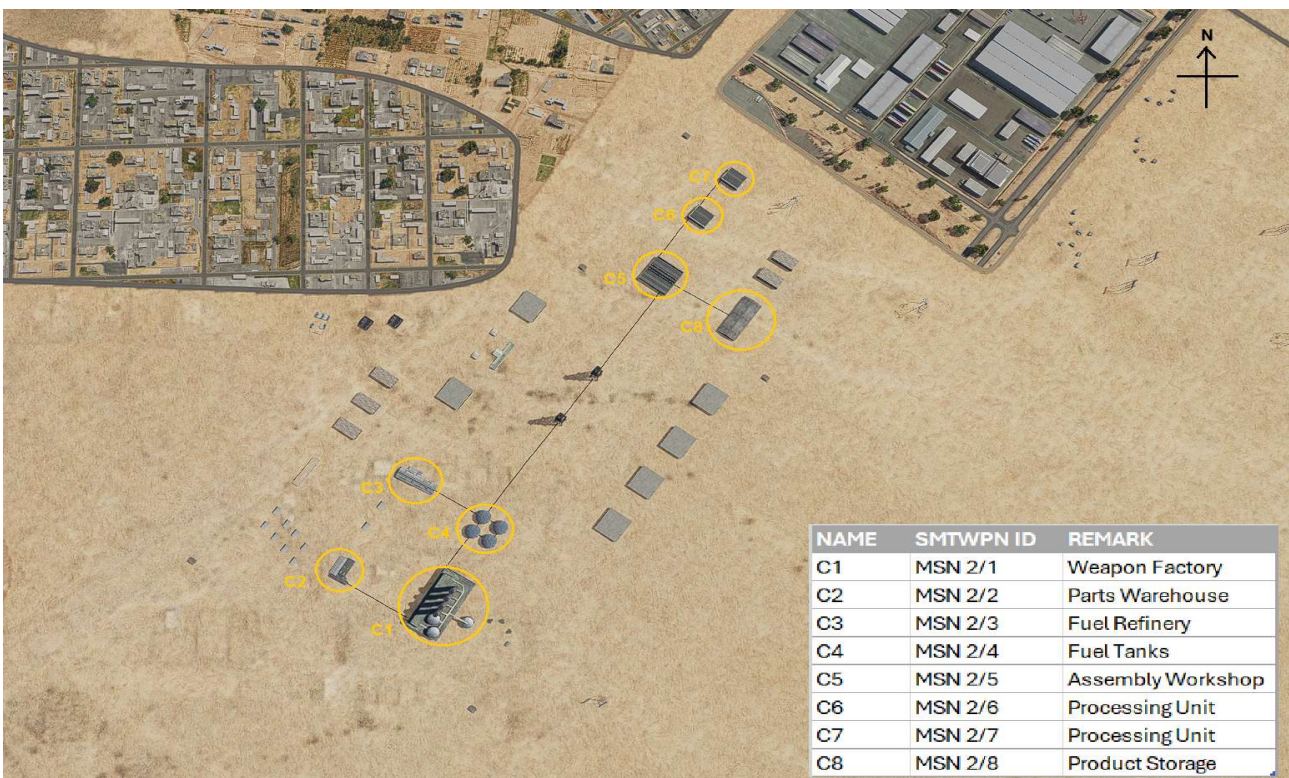




TARGET IMAGE (PKG#1170 PRIMARY - BANDAR LENGEH PORT)

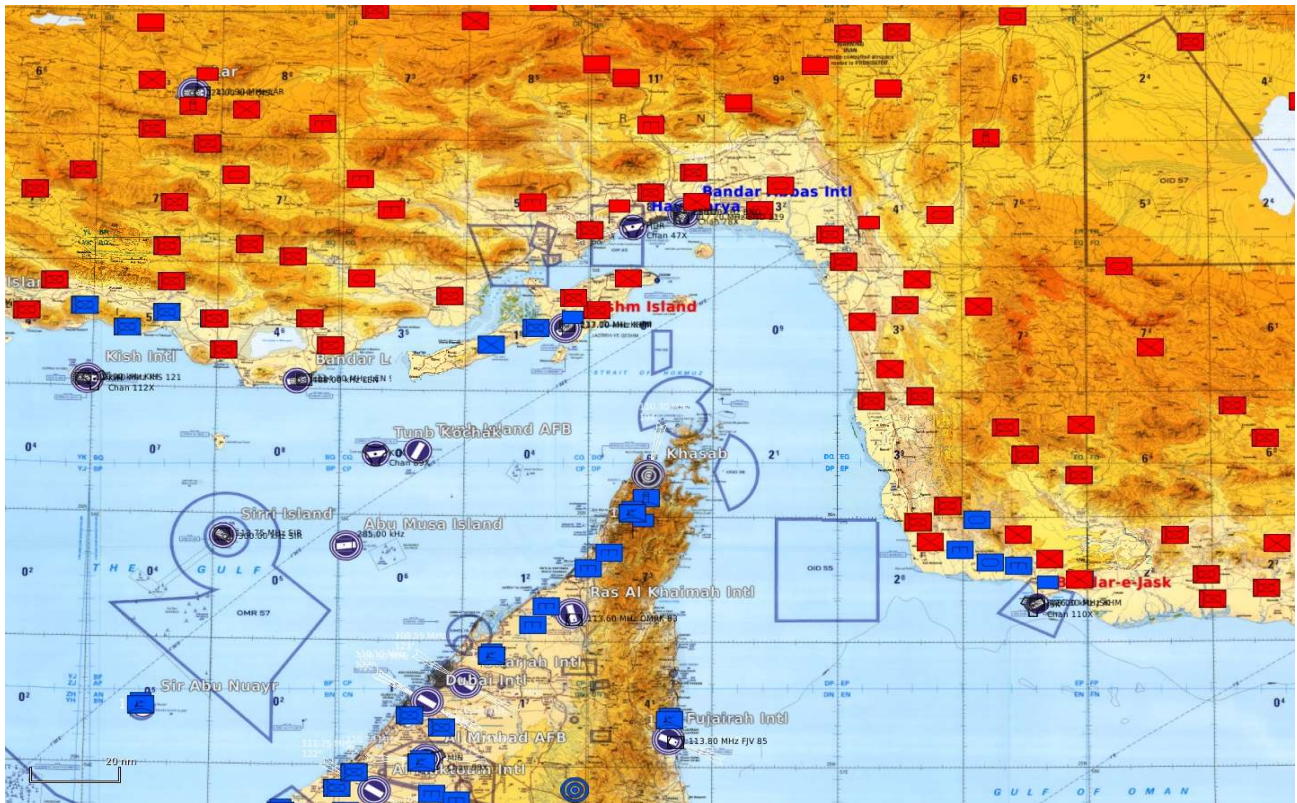


TARGET IMAGE (PKG#1170 SECONDARY - JENAH WEAPON FACTORY)





GROUND OPERATION UPDATE



INTERDICTION PLAN (PKG#1171 - IRAN 5TH ARMORED DIVISION)

